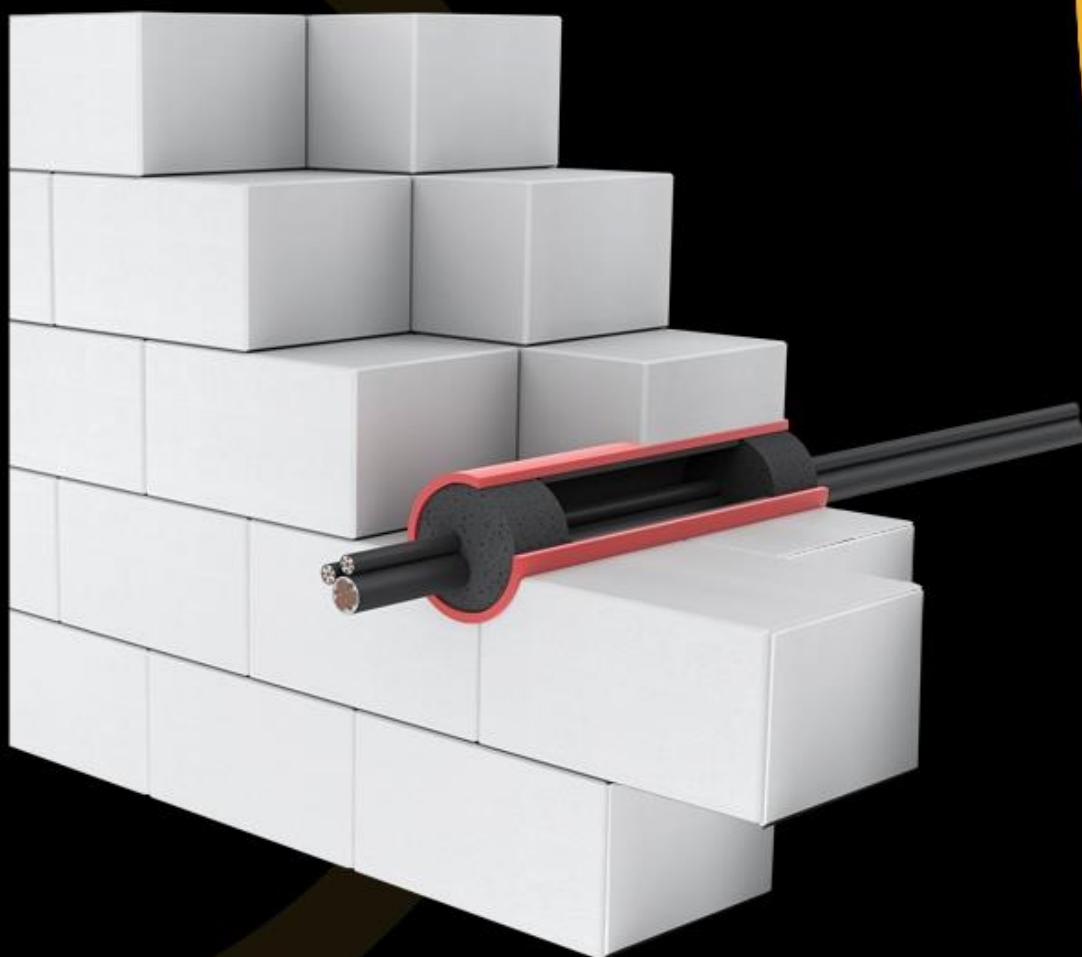


# INTU FR TRANSIT

*Firestop penetration*

TDS Technical Data Sheet



**•INTUSEAL®**  
*passive fire protection manufacturer*

[www.intuseal.com](http://www.intuseal.com)

## → PRODUCT DESCRIPTION

Firestop penetration **INTU FR TRANSIT** are made of a plastic casing, FEF foam filling and an intumescent material that expands under the influence of fire and fills the entire space after burnt-out electric cables.

- fire resistance class up to **EI 120**
- for use in walls and floors
- available sizes: from Ø58mm to Ø160mm
- possibility to protect the penetrations with/without cables

## → APPLICATION

Firestop penetration **INTU FR TRANSIT** are installed in openings in walls or floors for protecting cable penetrations (cables  $\leq 21$ mm, cable bundle up to 100mm), as well as openings alone without cables. The intumescent material that swells during a fire fills the hole completely, preventing fire and smoke from entering adjacent rooms. It is possible to run cables through an already installed block in the hole.

### Rigid walls:

The wall must be at least 150mm thick and have concrete, cellular concrete structure or masonry structure, with a minimum density of 600kg/m<sup>3</sup>

### Rigid floors:

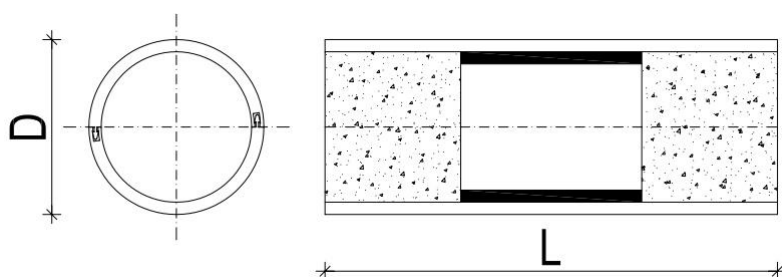
The floor must be at least 150mm thick and have concrete, cellular concrete structure or masonry structure, with a minimum density of 1700kg/m<sup>3</sup>



## → COMPLIANCE

- Reference standard:  
EN 1366-3 / ETAG 026-2 / EAD 350454-00-1104
- TDS
- SDS

## → AVAILABILITY, FIRE CLASSIFICATION

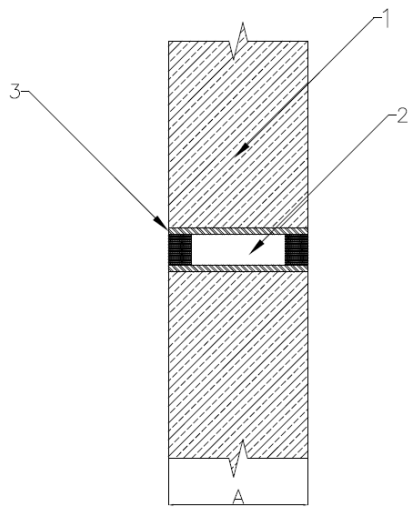
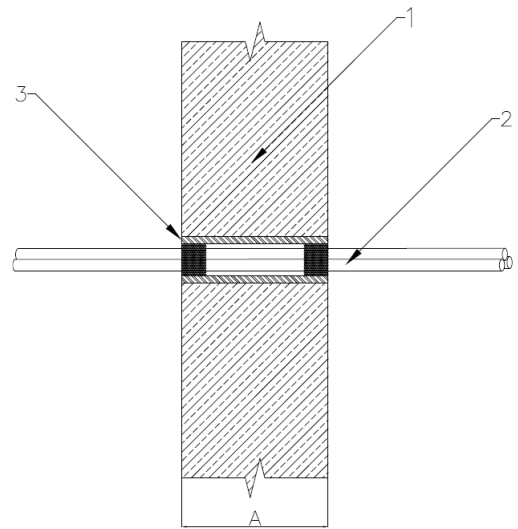


D – nominal diameter [mm]

L – length = 150mm

Nominal diameter D [mm]	58	83	110	160
Fire resistance	WALL – EI120 FLOOR – EI 120	WALL – EI120 FLOOR – EI 120	WALL – EI120 FLOOR – EI 120	WALL – EI120 FLOOR – EI 60
Art. No.	INTR58	INTR83	INTR110	INTR160

## ➔ SOLUTION DETAILS

	<p><b>Fig. 1. Penetrations without cables</b> A – partition width min. 150mm</p> <p>1 – wall/floor partition 2 – free space 3 – firestop penetration <b>INTU FR TRANSIT</b></p>
	<p><b>Fig. 2. Penetrations with cables</b> A – partition width min. 150mm</p> <p>1 – wall/floor partition 2 – single cable/bunch of cables (any gaps fill with intumescent acrylic mastic <b>INTU FR MASTIC</b>) 3 – firestop penetration <b>INTU FR TRANSIT</b></p>

## ➔ INSTALLATION METHOD

1. Adjust the size of the firestop partition to the size of the hole.
2. Push **INTU FR TRANSIT** into the hole.
3. Fill up the free space with mortar
4. For laying cables, cut out the hole in the block, and then run the cables through the fireproof block.
5. Any gaps fill with intumescent acrylic mastic **INTU FR MASTIC**

## ➔ TRANSPORT AND STORAGE

Store in dry and cool conditions at temperatures between + 5°C and + 25°C.